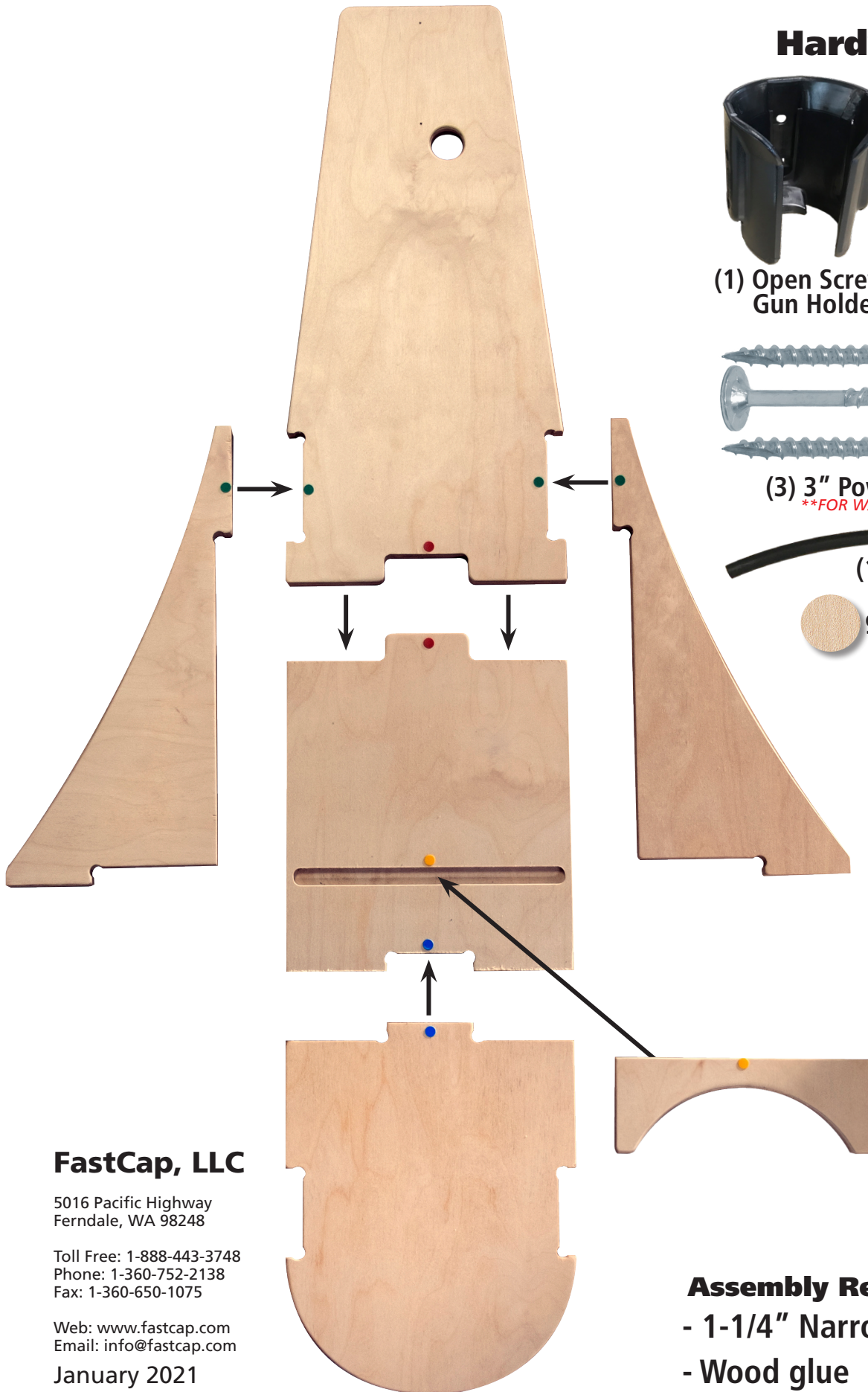
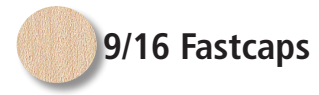


Backpack Vacuum Wall Stand Instructions



Hardware Kit



FastCap, LLC

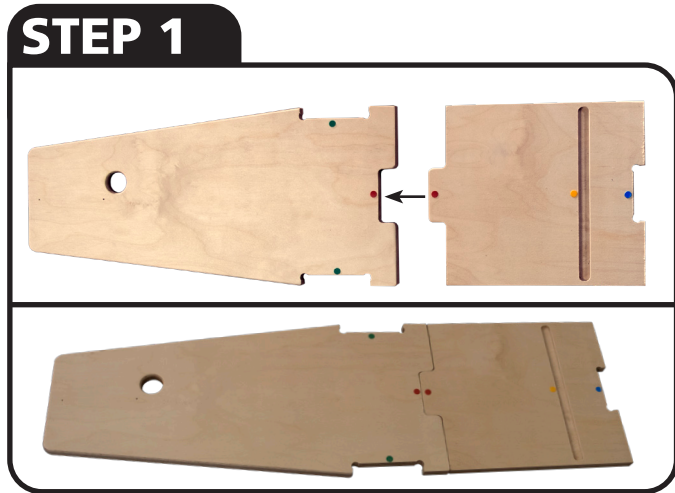
5016 Pacific Highway
Ferndale, WA 98248
Toll Free: 1-888-443-3748
Phone: 1-360-752-2138
Fax: 1-360-650-1075

Web: www.fastcap.com
Email: info@fastcap.com

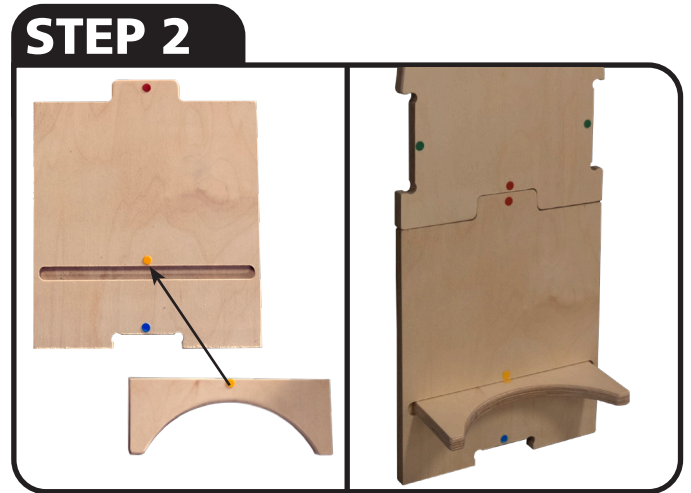
January 2021

Assembly Recommendations:
- 1-1/4" Narrow Crown Staples
- Wood glue

Backpack Vacuum Wall Stand Instructions

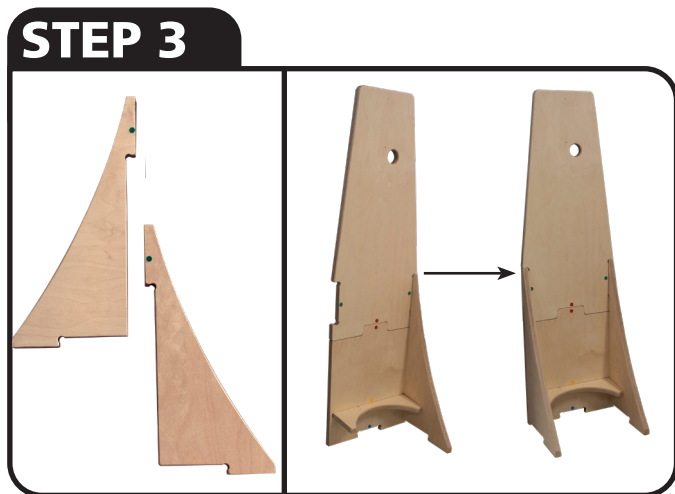


GLUE BACK PIECE



GLUE BRACE

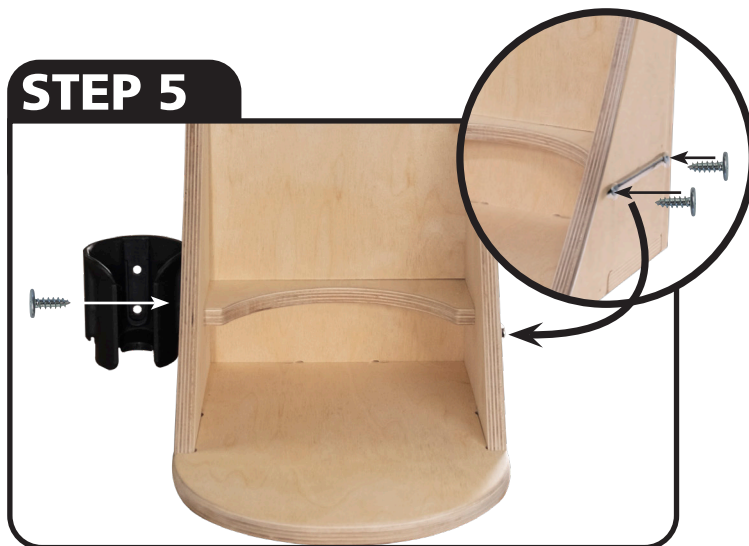
****DO NOT STAPLE BRACE TO BACK TILL STEP 6****



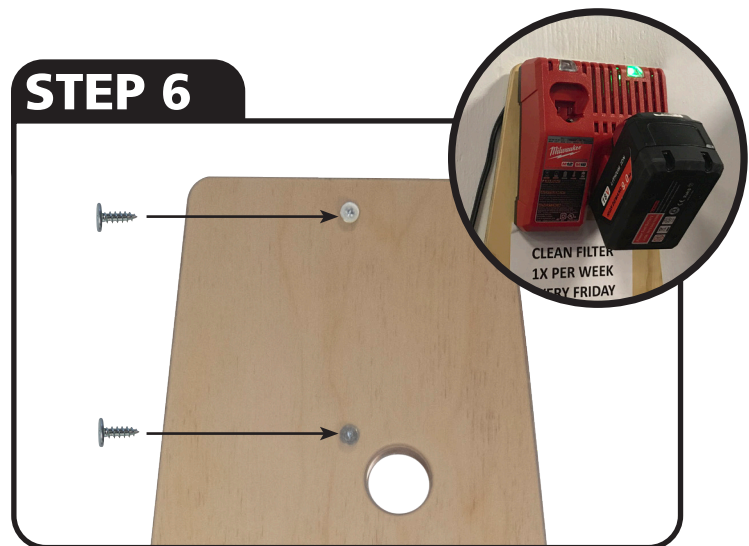
GLUE AND STAPLE SIDES TO BACK



GLUE AND STAPLE BOTTOM TO THE BACK AND SIDES



SCREW "SCREW GUN HOLDER" & TETHER STAPLE BRACE TO BACK



SCREW TWO POWERHEAD MINI 5/8" SCREWS INTO PRE-DRILLED HOLES FOR BATTERY CHARGER